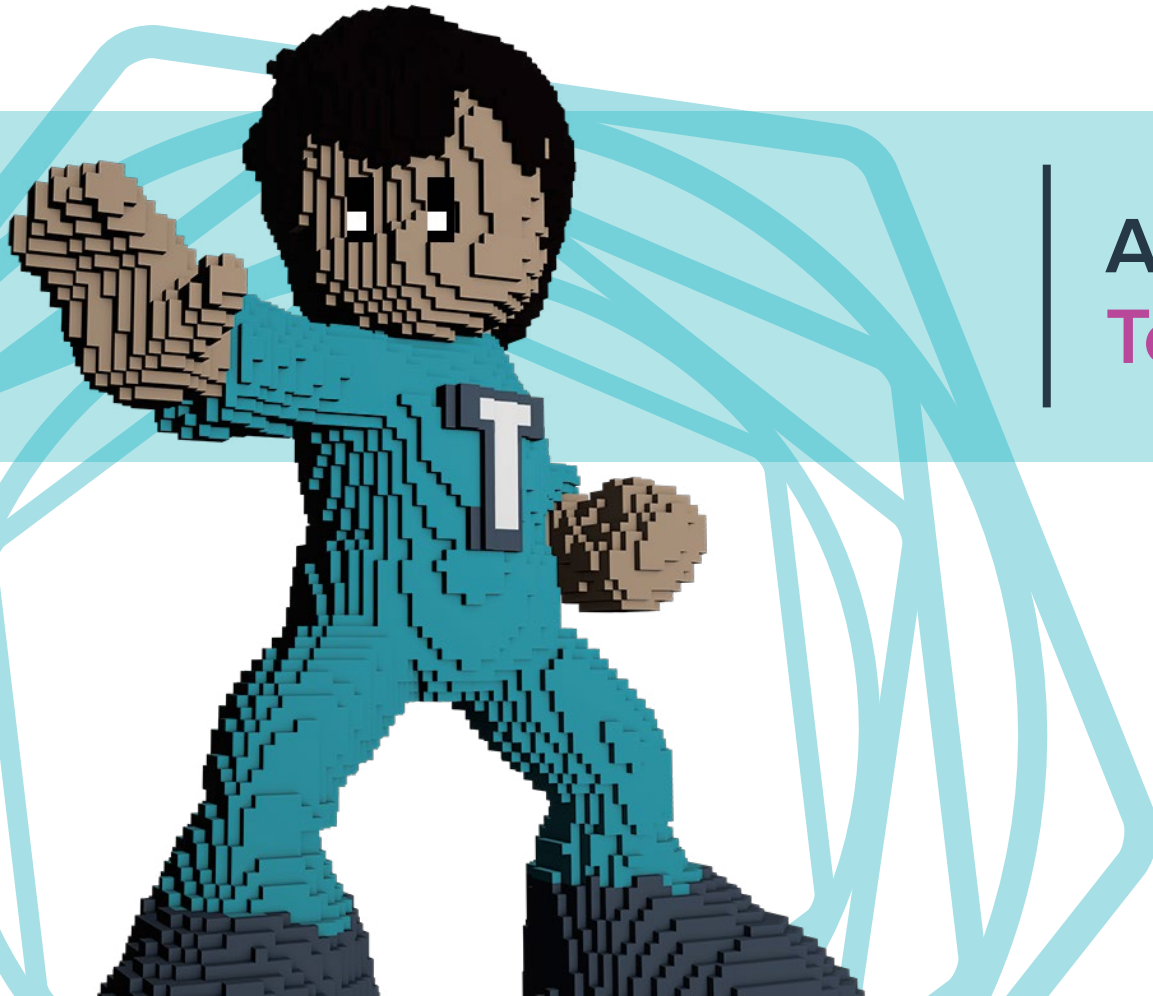


LEVEL-UP YOUR IT SECURITY



An Inside Look at the
Tenable Arcade

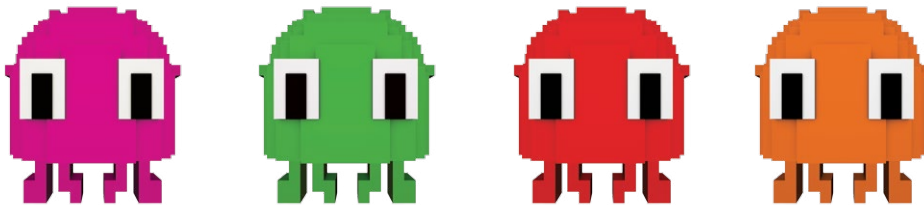
LEVEL-UP THE ARCADE AND YOUR GAME PLAY

The IT security business is serious. There's a lot at stake. But that doesn't mean you can't have a bit of fun and learn how to better protect the business at the same time. [Enter the Tenable Arcade.](#)

[Tenable](#) has made it possible for you to level-up your IT security. We've taken the arcade games of old and put a spin on them that you won't forget. Why? Because protecting the business is a lot like running an arcade or playing the games therein. Whatever your role, there are more foes and obstacles to know and defend against than ever before.

And, of course, there are gamers with diverse skill sets and backgrounds. You're tasked with playing smarter and getting that high score. Whatever your responsibilities, you need to 'level-up'—'game over' isn't an option. But complete visibility into every game, gamer, tool, and enemy across the entire arcade—all the time—is an option.

And it's only possible if you [level-up your game play](#).



GAMER TYPES

THE ARCADE MANAGER

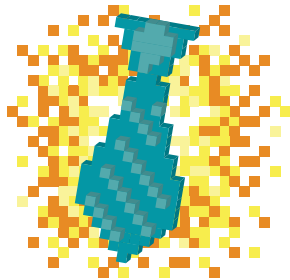
(IT Decision Maker)

The arcade manager or owner is a lot like the chief information security officer (CISO) or director of security operations. This person is responsible for protecting all assets in the business (games, consoles, etc.) from breaches and attacks.

If this is you, you're more than likely tasked with making serious decisions that impact every aspect of the business. Do these responsibilities look familiar?

- Create and shape an IT security strategy that aligns to business objectives
- Protect all critical assets and achieve operational excellence
- Achieve a return on investment for all IT security products and solutions
- Increase business productivity and security effectiveness

You're no doubt a gaming master, and you might even miss the good old days of playing. But now, you're tasked with achieving security assurance, or making sure that all current and future IT security investments—including your gamers—are working and protecting the business.



THE EXPERT GAMER

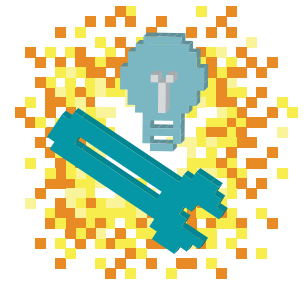
(IT Security Practitioner)

The expert gamer needs to have a wider and clearer view into the game-scape, whether it's virtual, mobile, or cloud. But new users and devices are coming on-line all the time, adding complexity.

All games and systems need to be constantly monitored for vulnerabilities in a way that is effective and that doesn't impact performance or productivity. To do that, you need to level-up by:

- Finding all vulnerabilities and threats in the IT environment—and fast
- Saving time and frustration with centrally managed workflows
- Prioritizing and then fixing vulnerabilities that impact critical assets
- Achieving greater context with analytics and removing data overload

You're at the front of an ongoing battle. And while data is your sidekick, you need to cut through the noise and get only what you need, when you need it. You need to play smarter and faster so you can protect the users and assets that matter most to the organization.



ARC-MAN

NONSTOP SCORING – SEE, SHARE, POWER-UP

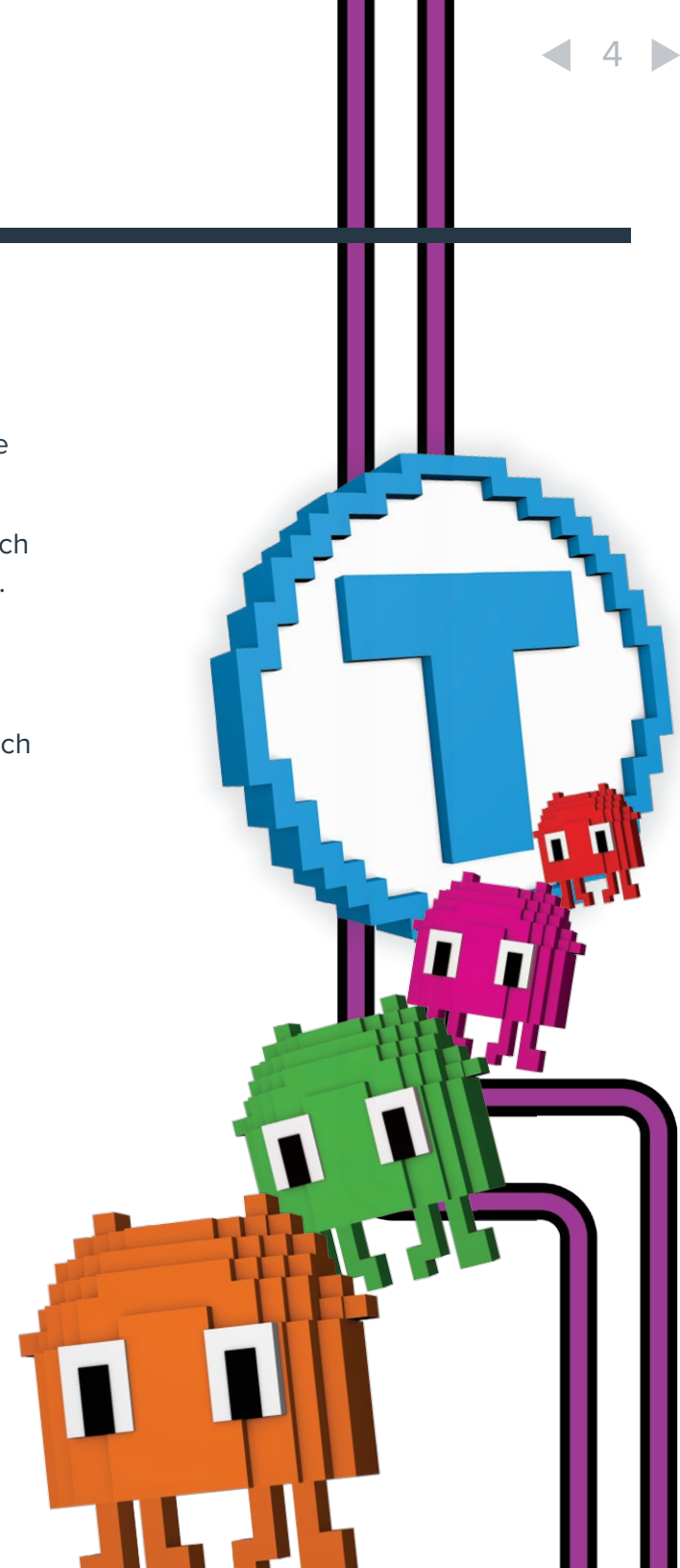
Are you familiar with ARC-Man? It's YOU, powered-up and playing nonstop with Tenable [SecurityCenter Continuous View \(CV\)](#).

ARC-Man is the ultimate security hero. He's armed with ARCs (his secret weapons), which enable him to achieve complete and continuous visibility into the entire IT environment.

In the non-gaming world, ARCs are [Assurance Report Cards](#), which are pre-built into SecurityCenter and enable you to measure risk and report against business objectives.

He can power-up by passing over ARC-dots, [Tenable's Five Critical Cyber Controls](#), which are pre-installed in SecurityCenter, enabling organizations to report against security objectives and prioritize workflows.

More importantly, ARC-Man shows your assurance score with a built-in leader board. ARC-Man covers your assets, making it possible for you to better focus your game play so you can protect all critical assets, achieve the highest assurance score, and WIN.



CONTINUOUS ASSURANCE

LEVEL - UP FROM ADVANCED ANALYTICS TO CONTINUOUS NETWORK MONITORING

SecurityCenter™ CV
continuous view

SecurityCenter CV is the market-defining Continuous Network Monitoring™ solution, providing the most comprehensive and integrated view of enterprise health. It's the only solution ([data sheet](#)) that brings together:

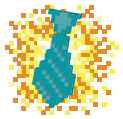
- Continuous Network Monitoring and advanced analytics
- The industry's first and only Assurance Report Cards (ARCs)
- Active scanning, passive detection, event correlation with advanced analytics and reporting
- Up-to-date vulnerability and threat intelligence information

When you play with SecurityCenter CV, you're implementing an IT security solution that protects the business, nonstop. You need to always be advancing to the next level and fighting and responding to the right vulnerabilities and threats at the right time.

You can do this with Tenable.

CONTINUOUS ASSURANCE

POWER-UP AND PLAY NONSTOP



THE ARCADE OWNER / MANAGER: Security Assurance

Your Power-Ups

- **Return on Investment** – Know that the security investments you've deployed are working
- **Complete Visibility** – Tenable's unique sensors work together to see everything with greater focus
- **Security Effectiveness** – With ARCs, you can easily visualize and measure risk to the business
- **Business Productivity** – Decrease costs and resolve the data overload problem by arming your team with the right solution and tools



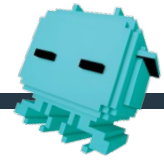
THE EXPERT GAMER: Speed and Vision

Your Unique Plays

- **Communication** – With ARCs, you can act on and communicate risks and priorities across the organization and to executives
- **Tenable's Critical Cyber Controls** – Create and then execute your security program with pre-built controls
- **Streamlined Compliance** – Get the basics done and achieve compliance... then and move beyond it
- **Continuous Asset Discovery** – Discover all mobile, physical, virtual, and cloud instances on the network

Prepare now for the next phase of IT security and level-up automatically and continuously as the business grows and the network expands. Security will become more pervasive—it needs to be everywhere. Ensure that as your arcade expands, your security effectiveness and skill level expand with it. Win the game before it starts.

— NETWORK INVADERS —



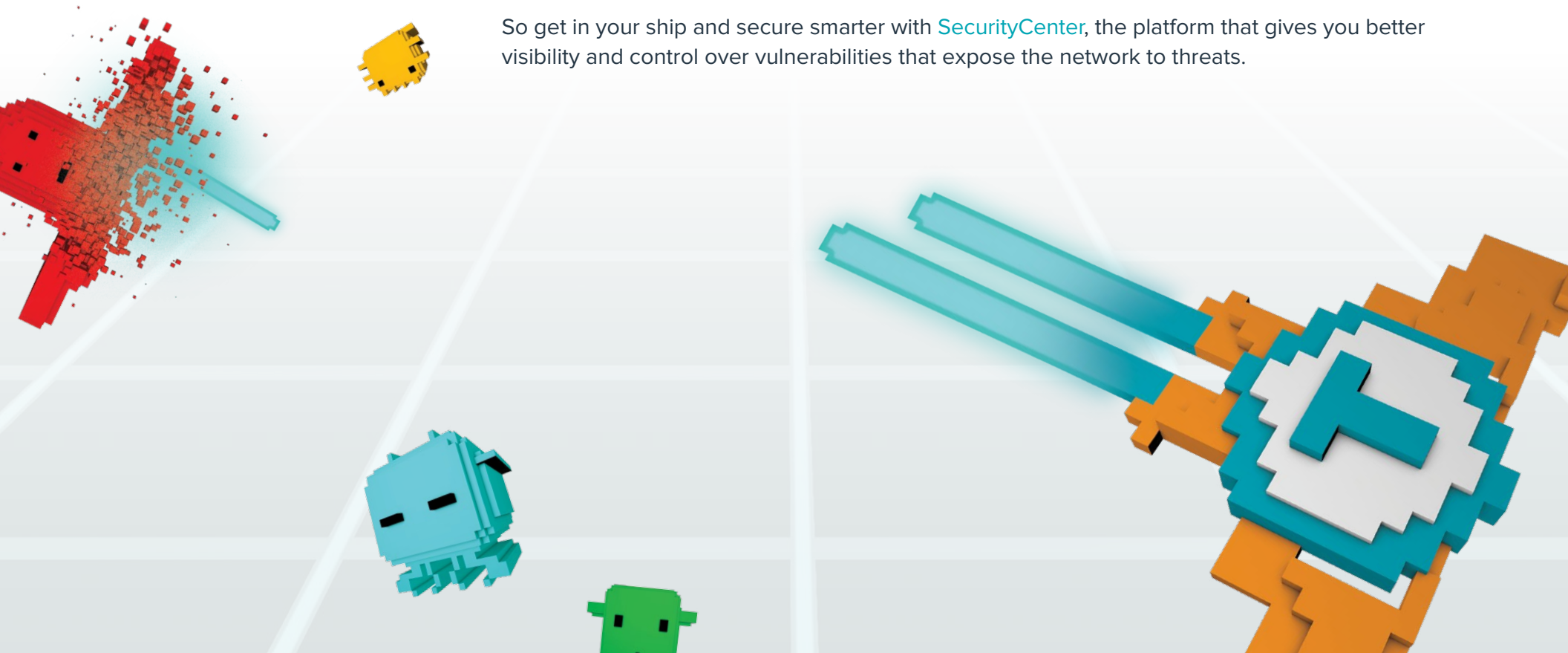
SEE ALL ENEMIES AND DESTROY ALL THREATS

The modern networked organization is constantly evolving as networks go beyond traditional walls. This has created new attack vectors, and it's changing the game.

To master the game, you're tasked with ensuring that all IT security solutions, tools, and fellow gaming experts are working together seamlessly. To do this, you need to see all mobile devices, web-enabled and mobile applications, cloud environments, hypervisors, social media, web browsers, computers, and more.

Why? Because they're vulnerable.

So get in your ship and secure smarter with [SecurityCenter](#), the platform that gives you better visibility and control over vulnerabilities that expose the network to threats.



— ADVANCED ANALYTICS AND AUTOMATION —

LEVEL-UP FROM VULNERABILITY MANAGEMENT TO ADVANCED ANALYTICS AND CONTINUOUS CONTEXT

SecurityCenter™

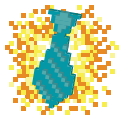
The [SecurityCenter™](#) platform provides the most comprehensive and integrated view of enterprise security posture to reduce business risk and ensure compliance. It's the next generation vulnerability analytics solution, and it includes:

- **Assurance Report Cards** – Continuously measure effectiveness of customer-defined security policies based on high-level business objectives
- **Advanced Analytics/Trending** – Contextual insight and actionable information to prioritize security issues associated with security posture of all enterprise assets
- **Highly Customizable Dashboards/Reports** – New HTML5-based user interface to satisfy specific needs of all roles
- **Cumulative Scan Results** – Consolidate data from multiple on-premises Nessus® scanners and provide remediation trending information

You need to focus in on the critical data and actions that matter most. Informed decision-making is best; otherwise, you might end up wandering aimlessly throughout the IT environment, lost in data overload.

— ADVANCED ANALYTICS AND AUTOMATION —

SMARTER, FASTER PROTECTION WITHIN YOUR CONTROL



THE ARCADE OWNER / MANAGER: Platform Leadership

Your Power-Ups

- **Platform Leadership** – Scale your security and achieve business outcomes with analytics and trending
- **Manage Risk Easily** – Know what critical assets need to be protected first and why
- **Fast, Integrated Security** – Enable the business to take advantage of new technologies with fast response time
- **Better Team Management** – Distribute responsibilities across multiple geographies and teams using role-based access control



THE EXPERT GAMER: Data with Continuous Context

Your Unique Plays

- **Manage Security Posture** – Scan everything, everywhere, using customizable schedules and black-out windows
- **Automate Integration** – Use APIs and enable centralized management, reporting, remediation, and workflow
- **Consolidate Data with Content** – Auto-generated from multiple on premise Nessus scanners and provide with remediation trending information
- **Dynamic Asset Classification** – Easily group assets based on policies that meet specific security control criteria

Some games are focused on fighting bad guys, while others are journeys through complicated mazes to test your wits and effectiveness at how you use your weapons and intelligence. Level-up with SecurityCenter so you can see everything with greater focus. Then, know what to fix or fight first.

— MEGA TENABLEMAN —

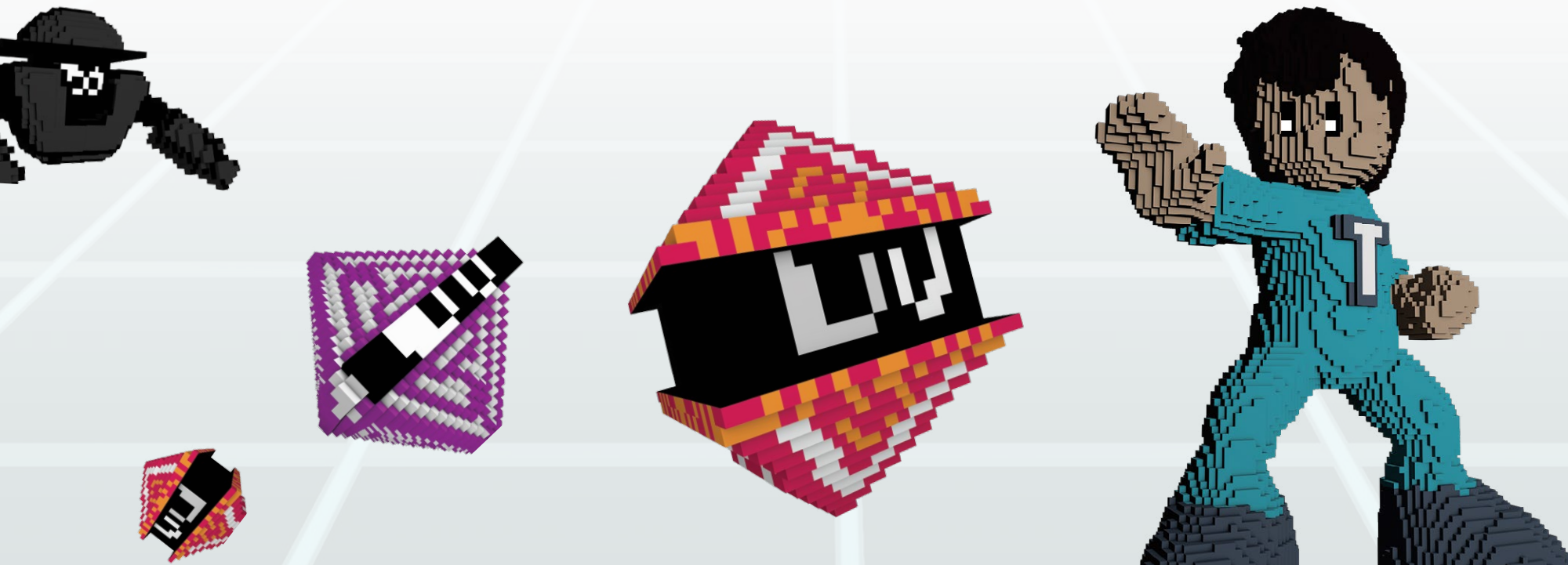
TAKE ON THE WORLD... WITH TEAM TENABLE

The bad guys are good. But the good guys are better. Attackers are taking advantage of gaps in visibility and protection and it's creating a strain on security professionals. You can team-up with [Tenable](#) for better game play and effective management of your vulnerability program.

Enter [Mega Tenableman](#), a creation of Dr. Gula.

Mega Tenableman is YOU, and you're tasked with navigating a series of network environments filled with a variety of malicious threats (e.g., backdoor vulnerabilities, botnets, and ASP rootkits) and a supreme hacker boss responsible for infecting the network—all of which needs eliminating.

Mega Tenableman powers-up by eliminating threats that leave behind [Assurance Report Cards](#). And he levels-up by defeating the source of the threat. He's backed by [Team Tenable](#). He is Team Tenable.



— CUSTOMIZED VULNERABILITY MANAGEMENT —

LEVEL-UP FROM VULNERABILITY ASSESSMENT TO VULNERABILITY MANAGEMENT



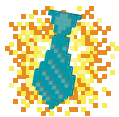
Nessus® Manager combines the powerful detection, scanning, and auditing features of Nessus, the world's most widely deployed vulnerability scanner, with extensive management and collaboration functions. It protects physical, virtual, mobile and cloud environments. Nessus Manager is available for the cloud, as **Nessus® Cloud**, hosted by **Tenable**.

- **Customized Workflows** – Endless possibilities for creating highly customized workflows for your program
- **Continuously Updated** – Supported by a world-renowned research team and access to Tenable's database
- **Tight Integration and API Extensibility** – Integrates with patch management, SIEMs, and other security solutions
- **Nessus Agents** – Alleviate headaches associated with traditional network scanning, like getting credentials

To level-up, you need to move beyond scanning and assessment and begin implementing a security strategy that aligns to the real-world demands of the modern-day organization. As your business grows, so too must your security program. Gaming is team play, and **Tenable does it with you**.

CUSTOMIZED VULNERABILITY MANAGEMENT

EXTENDED MANAGEMENT AND COLLABORATION



THE ARCADE OWNER / MANAGER:
Team Productivity

Your Power-Ups

- **Hosted Vulnerability Management** – No software to deploy or maintain; store all your scan data using secure, remote storage
- **Team Collaboration** – Share resources to improve team efficiency: assign scanners, policies and schedules, and report access to multiple users or groups
- **Improved Risk Management** – Better analysis with context from existing infrastructure and partner frameworks
- **Easy Deployment and Administration** – Customized deployment options mean faster time-to-value



THE EXPERT GAMER:
Easy Play and Accuracy

Your Unique Plays

- **Work and Secure Smarter** – Share resources and control multiple Nessus scanners across roles via policies and reports via policies and reports to secure faster and achieve compliance
- **Extend Scanning Coverage** – Cover more complex networks, cloud deployments, and geographically distributed locations from single console
- **Scanning Without Host Credentials** – Use agents to quickly discover assets that you want or need to scan without credentials and without the headaches
- **Scanning Quickly** – Agents use local host resources for scanning, making it easy to scan a large number of assets



LEVEL-UP

YOUR IT SECURITY NOW!

www.tenable.com/arcade

ABOUT TENABLE NETWORK SECURITY

Tenable Network Security provides continuous network monitoring to **identify vulnerabilities**, **reduce risk** and **ensure compliance**.

Our family of products includes SecurityCenter Continuous View™, which provides the most comprehensive and integrated view of network health, and Nessus®, the global standard in detecting and assessing network data.

